

Who we are:

JEFA Tech manufactures cable assemblies that connect Cradlepoint routers to external antennas.

- Made to order in Hollywood, MD
- Same day production and shipping
- Tested and certified by Cradlepoint
- Custom lengths and configurations available
- Small or large volume orders supported



Cradlepoint to External Antenna Cable

- SMA Male to N Male
- Low Loss 400 FLEX

SKU: CA-400F-NM-SMA-L (L= cable length in feet)

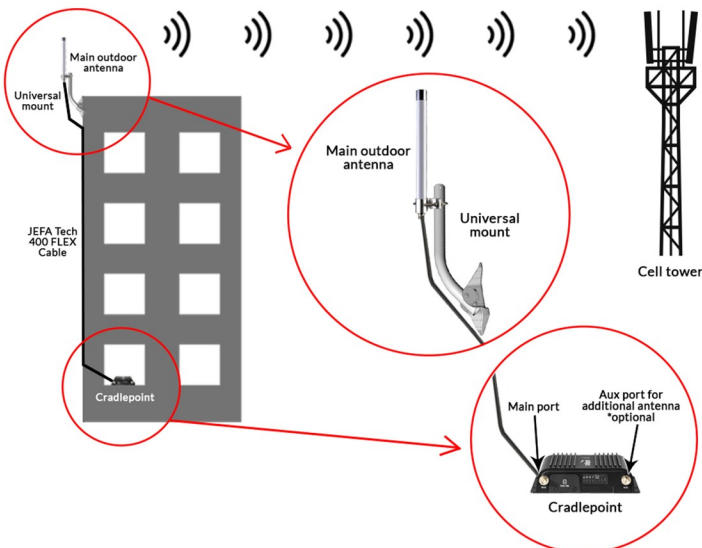
Connect a Cradlepoint router to any of the following antennas:

Omnidirectional Antenna Part # 170668-000

Directional Patch Part # 170587-000

Directional Yagi Part # 170588-000

Any 3G/4G antenna with an N Female connector



FAQ:

What cable lengths are available?

Stock lengths are available, and cables can be made to order same day at any length. Please measure carefully as return restrictions may apply to custom lengths.

What Cradlepoint routers work with these cables?

All Cradlepoint routers with integrated modems are compatible. Any routers using a USB Stick carrier modem will require an adapter.



Cradlepoint Antenna Extension Cable

- SMA Male to SMA Female
- Low Loss 240 FLEX

SKU: CA-240F-SMA-SMAF-L (L= cable length in feet)

Extend the existing cables on the following antennas:

Cradlepoint Cellular Paddle Antennas

Indoor Outdoor Panel Patch # 170669-000 (requires two cables)

12 in Magnet Mount Part # 170605-000

Mini Magnet Mount Part # 170606-000

3-in-1 Adhesive-Mount Antenna Part # 170653-001

Any 3G/4G antenna with SMA Male connector

